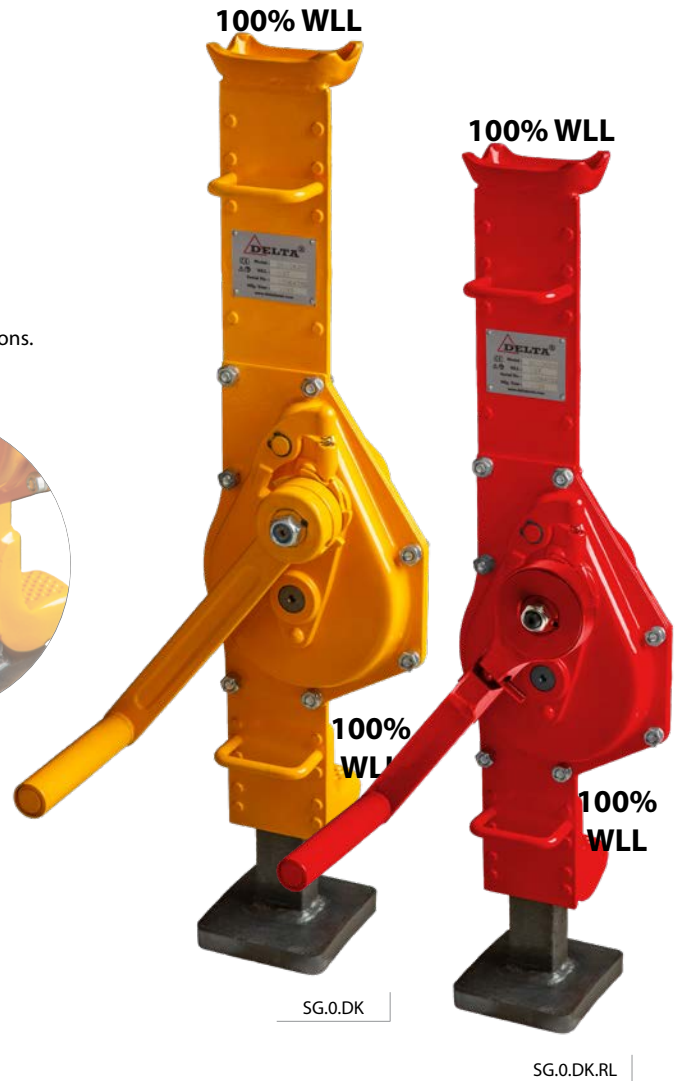
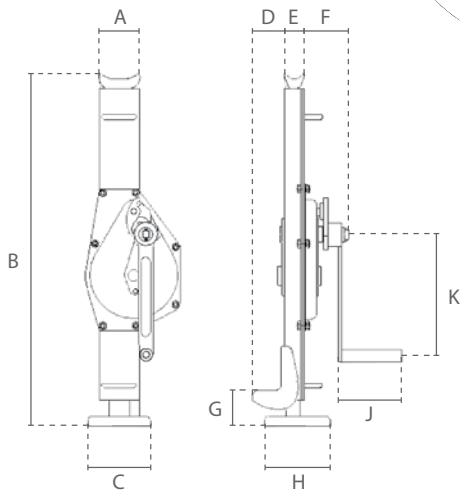
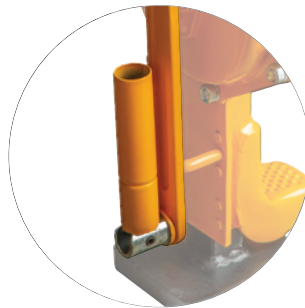




Steel rack jack

Features

- » Can be used in any direction.
- » Made of high tensile forged steel.
- » Supporting parts are extra hardened.
- » With safety lever with double pawls.
- » High transportability due to handles and foldable lever.
- » Capacity on the toe is 100%. (20 ton 70%)
- » Complies with the Machinery Directive 2006/42/EC. Supplied with test certificate, CE declaration of conformity and operating instructions.



Specifications					
Article code	Capacity	Lever type	Hoisting height	Effort for max load	Net weight
	ton		mm	N	kg
SG.0.DK.015	1,500	Safety lever	320	150±20	14
SG.0.DK.03	3,000		360	240±20	21
SG.0.DK.05	5,000		345	230±20	29
SG.0.DK.10	10,000		410	320±30	47
SG.0.DK.20	20,000		320	620±30	72
SG.0.DK.015.RL	1,500	Ratchet lever	320	150±20	14
SG.0.DK.03.RL	3,000		360	240±20	22
SG.0.DK.05.RL	5,000		345	230±20	30

Dimensions (mm)											
Capacity	A	B	C	D	E	F	G	H	J	K	
1,500	90	600	100	55	55	75	60	100	120	225	
3,000	90	730	130	65	55	95	70	130	130	250	
5,000	115	730	140	71	75	90	70	170	130	250	
10,000	130	810	140	80	76	119	90	170	250	300	
20,000	135	860	150	78	85	135	100	180	250	380	